

Turbine Technology

OGT 50Hz 1~

Submersible Grinder Pump

Series: OGT
.75kW, 2850RPM, 50Hz 1~

Description

Aquatec's Omni Grind Turbine pump combines high head capabilities with low amp technology to offer a 20 year expected pump life.

The Grinder Pump is designed to reduce domestic sewage to a finely ground slurry. With an International Protection Rating of IP68, Aquatec's pumps hold the highest levels of protection on the market today.



Discharge	32mm BSP-F
Liquid Temperature	104°F (40°C) Continuous
Motor Housing	Cast Iron ASTM A-48, Class 30
Seal Plate	Cast Iron ASTM A-48, Class 30
Suction Casing	Cast Iron ASTM A-48, Class 30
Impeller	Stainless Steel with Abrasion Resistant Coating
Shredding Ring	Hardened 440C Stainless Steel Rockwell® C-55.
Cutter	Hardened 440C Stainless Steel, Rockwell® C-55.
Shaft	416 Stainless Steel
Square Rings	Buna-N
O-Rings	Buna-N
Hardware	316 Series Stainless Steel
Paint	Axalta™ Corlar® Epoxy
Seal	
<i>Design</i>	Single Mechanical
<i>Material</i>	Rotating Faces - Silicon-Carbide Stationary Faces - Silicon-Carbide Elastomer - Buna-N Hardware -300 Series Stainless
Cord Entry	Custom Moulded, Quick Connect, for Sealing and Strain Relief. Rated IP68
Cord	
<i>Type</i>	CSA/UL Approved SOW (quick disconnect)
<i>Manual</i>	14/3
<i>Automatic</i>	12/5
Upper Bearing	
<i>Design</i>	Single Row, Ball, Oil Lubricated
<i>Load</i>	Radial
Lower Bearing	
<i>Design</i>	Single Row, Ball, Oil Lubricated
<i>Load</i>	Radial & Thrust
Motor	
<i>Design</i>	Oil-Filled Squirrel Cage Induction
<i>Insulation</i>	Class F
<i>Type</i>	Capacitor Start / Capacitor Run
Optional Equipment	Additional Cord Length, C-Channel Check Valve Kit for Guide Channel mounting of pumps

OGT Technical Specification



Turbine Technology

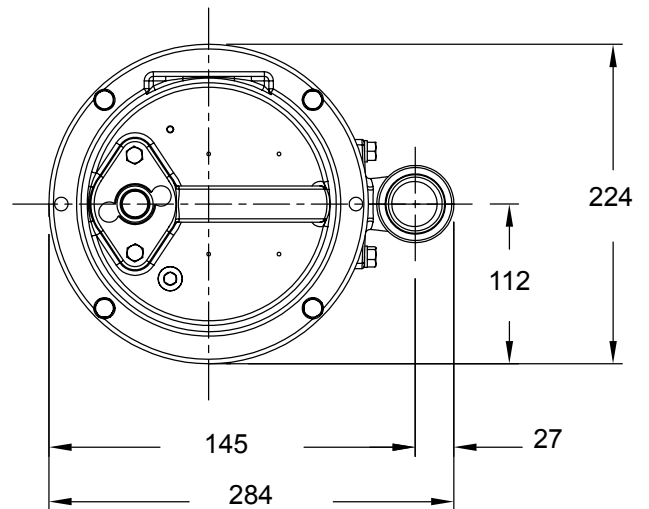
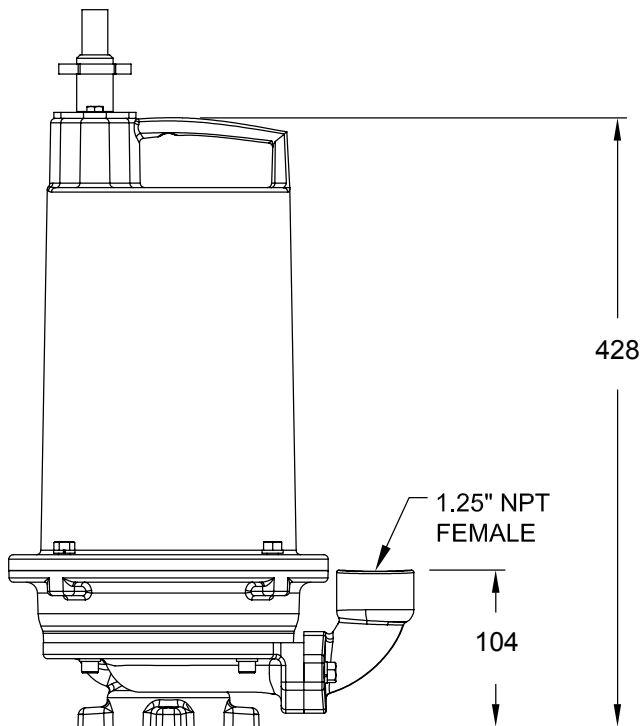
OGT 50Hz 1~

Motor Data - Model OGT 10S2AU

Model No	OGT10S2AU	Nema Start Code	D
Part No	139736	Full Load Amps	8.2
kW	0.75	Locked Rotor Amps	25.9
Phases	1~	Cord Size (external level control)	12/5
V	240	Cord Size (inbuilt level control)	12/5
Hz	50	Cord Type	SOW
Rpm (Nom)	2850	Cord O.D.	18mm
No. of Poles	2	Cord Length	15m

Important

- 1) Pump may operate to 80 meters without damage to pump
- 2) Refer to operational manual for amp draw above 50m
- 3) Pump may be operated "Dry" for extended periods without damage to motor and/or seals
- 4) This pump is not appropriate for those applications specified as class | division | hazardous locations



OGT Performance Curve Turbine Technology



Series OGT 0.75kW, 2850RPM, 50Hz

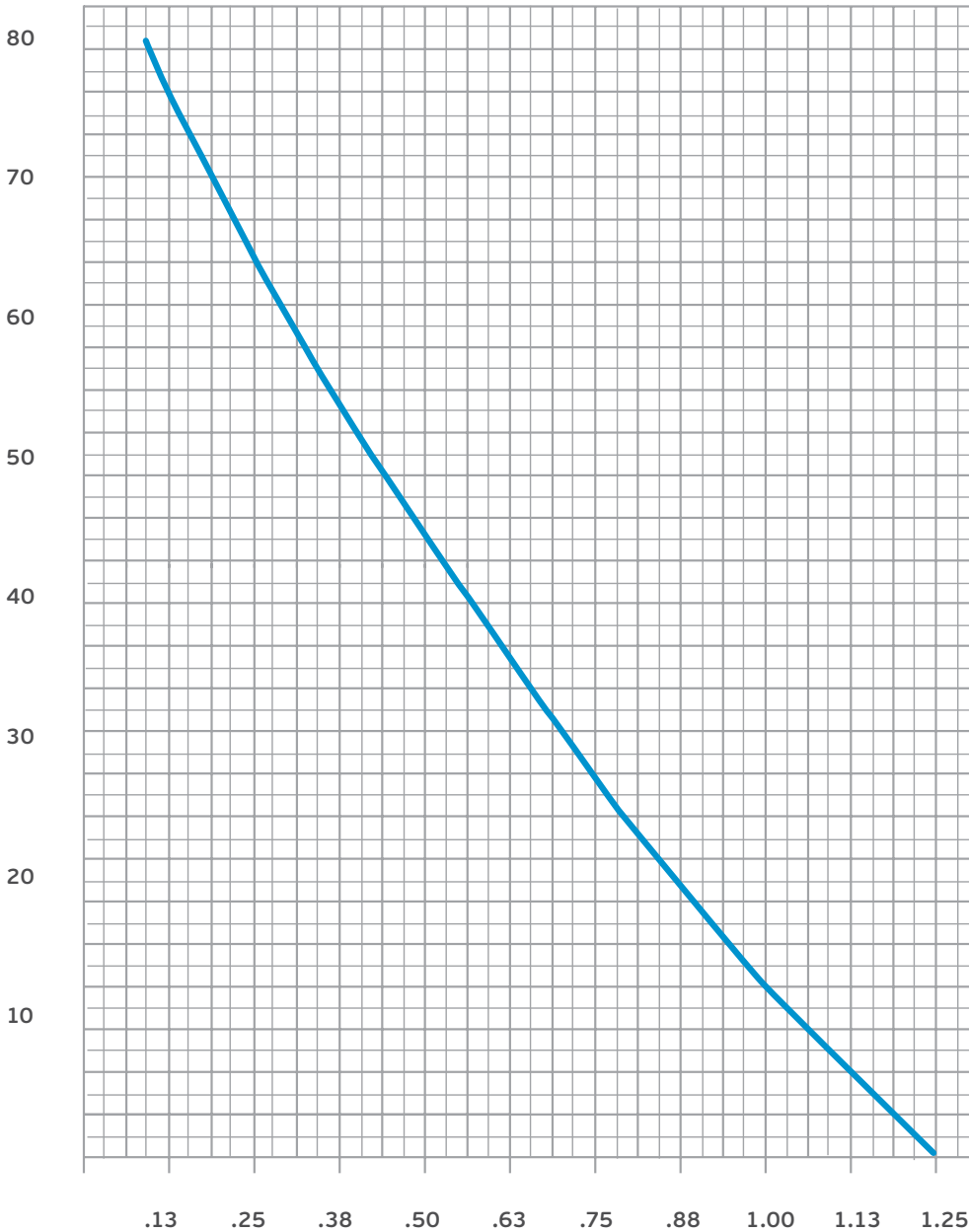
Performance curve includes impact of integral anti-siphon and check valve.

Pump Design head 50m Refer to Notes 1 & 2.

Testing is performed with water, specific gravity 1.0 @ 20°C, other fluids may vary performance.

Performance Curve

Metres/Head



Litres/Second